



SpeedFace Mini

Access Control & Time and Attendance Terminal with Visible Light Facial Recognition & Palm Recognition

Proactive Facial Recognition New Height of Speedy Recognition Wide Pose Angle Acceptance Touchless for Better Hygiene Wide Palm Pose Angle Acceptance

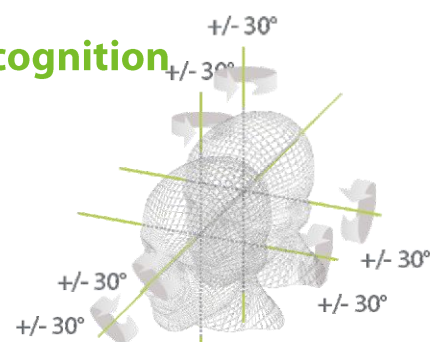


Features

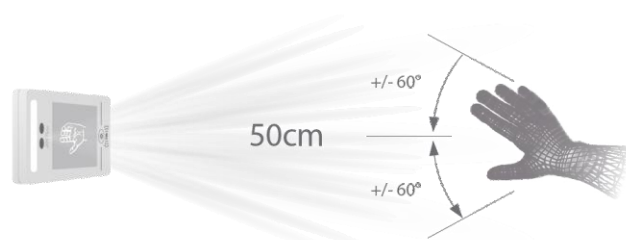
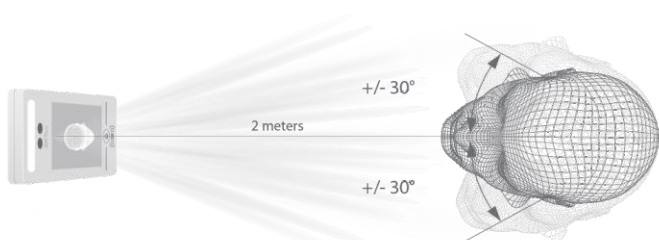
- Visible Light Facial Recognition
- Anti-spoofing algorithm against print attack (laser, color and B/W photos), videos attack and 3D mask attack
- Multiple verification methods: Face / Palm / Card / Password
- Available card modules: 125kHz ID card (EM) / 13.56MHz IC card
- Supplement light with adjustable brightness
- 800 face templates capacity, 800 palm templates capacity

Recognition distance up to 2m and extra wide angle recognition

The recognition distance has been greatly extended to 2 meters, which significantly improves the maximum track rate. While most of the algorithms only support +/-15° of detectable face angle, SpeedFace Mini doubles the detection angle in terms of head rotation and tilt to +/- 30°.



Touchless palm authentication method with a novel hand tracking technique allowing angle tolerance as wide as +/-60° in the roll axis and a recognition distance of 50cm.

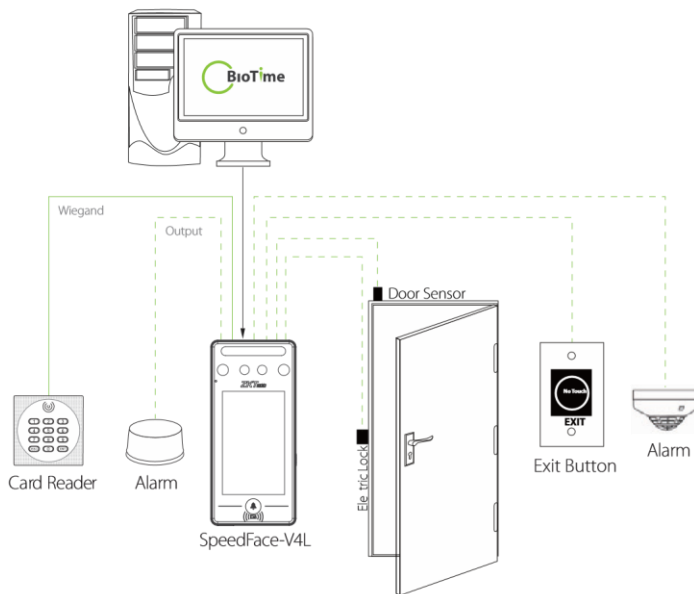


Specifications

Display	4" touch screen
Face Capacity	800

Palm Capacity	800
Card Capacity	1,000
Transactions	150,000
Operation System	Linux
Standard Functions	ID Card, ADMS, T9 Input, DST, Camera, 9-digit User ID, Access Levels, Groups, Holidays, Anti-passback, Record Query, Tamper Switch Alarm, Multiple Verification Methods, Palm Recognition, WiFi
Hardware	900MHz Dual Core CPU; 512MB RAM / 512MB Flash; 2MP Binocular Camera; Adjustable LED Supplement Lighting
Communication	TCP/IP, USB Host, WiFi, Wiegand Input/Output, RS485
Access Control Interface	3rd-party Electric Lock, Door Sensor, Exit Button, Alarm Output, Auxiliary Input
Optional Function	13.56MHz IC Card, SRB Function, Cable Box
Facial Recognition Speed	≤1s
Biometrics Algorithms	ZKFace V5.8 & ZKPalm V12.0
Power Supply	12V 3A
Working Humidity	10% ~ 90%
Working Temperature	0°C ~ 45°C (32°F ~ 113°F)
Dimensions (W*H*D)	72.94 * 157.94 * 23 (mm)
Net Weight	260g
Gross Weight	850g
Supported Software	ZKBioSecurity

Configuration



Dimensions (mm)

