



Horus E2

Android-based Biometric Terminal for T&A and Access Control



5-inches LED Touch Screen



Android 10.0



4G LTE



Mobile Attendance



125kHz & 13.6MHz Dual Frequency Card

Compatible with

ZKBio CVAccess

Compatible with

ZKBio Time



Horus E2

Horus E2-QR

Horus E2-FP

Horus E2-B

The Horus E2 from ZKTeco is an Android-based multi-biometrics terminal designed to streamline both time attendance and access control. Leveraging ZKTeco's cutting-edge technology, the Horus E2 supports a variety of authentication methods, including facial authentication, fingerprint scanning, multi-tech card authentication, and QR code scanning. These features meet the diverse needs of users across various environments. The device ensures reliable connectivity through dual-frequency Wi-Fi and 4G LTE, facilitating seamless network integration. The Horus E2 is compatible with Android 10 operating system, which simplifies the integration with third-party applications. Additionally, it includes an optional removable backup battery, enhancing its reliability and making it an ideal solution for temporary site management.

Features

Extended Mobile Use:

Equipped with a 2,000mAh lithium back up battery (removable), ideal for mobile and remote applications.

Versatile Network Connectivity:

Supports LTE, Wi-Fi, and TCP/IP, enabling flexible connectivity options for various deployment scenarios.

Multi-Modal Authentication:

Features advanced biometric technologies, including facial authentication, fingerprint scanning, RFID, QR code authentication, and PIN entry, catering to a wide range of security requirements.

Bluetooth 4.1 Support:

Allows for wireless communication, enhancing connectivity with other devices.

High Capacity:

Can accommodate up to 50,000 users and their biometric templates (facial and fingerprint), suitable for large-scale deployments.

Modern Operating System:

Runs on Android 10, providing a stable and secure platform for all functionalities.

Optimized Display:

Boasts a 5-inches narrow bezel Full HD touchscreen, offering an enhanced user experience with superior visual clarity.

High Scalability:





Support android LCDP for the 3rd-party application integration.

Support Dual-frequency (125kHz and 13.56MHz) card module (standard).

Advance Security Measure:

Support encryption of all biometric credentials and personal information transfer that reaches AES-256 standard.

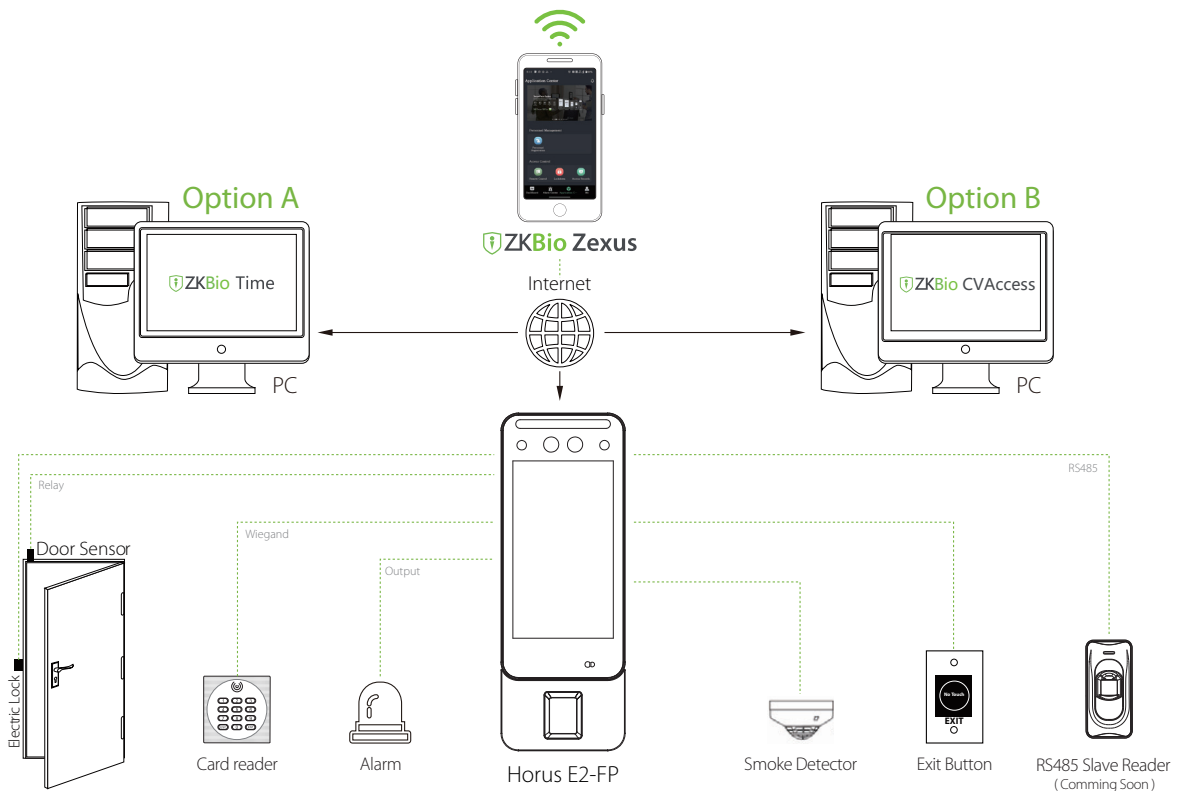
Specifications

Model	Horus E2	Horus E2-FP	* Horus E2-B	Horus E2-QR
Product Appearance				
Display	5" @ TFT Color Touch LED Screen (780*1280)			
Camera	Dual Camera @ 2MP			
Operation System	Android 10.0			
Hardware	CPU: Octa-core @ 2.0 GHz RAM: 2GB; ROM: 16GB Speaker: 7ohm @1.14W Sensitivity: -36 dB/ Omni-directional/ Signal-to-Noise Ratio: 60 dB/ Impedance: 2.2KΩ Supplement Light: Yes			
Authentication method	Face / Card / Password (Virtual Keypad)/ Fingerprint (Optional) / QR Code (Optional)			
Fingerprint Template Capacity	N/A	30,000 (1:N)	N/A	N/A
Face Template Capacity	20,000(1:N)			
Card Capacity	50,000(1:N)			
User Capacity	50,000			
Transaction Capacity	200,000			
Max. User Password Length	8 Digits			
Biometric Authentication Speed	less than 1 sec (Facial Authentication)	less than 0.5 sec (Fingerprint) less than 1 sec (Facial Authentication)	less than 1 sec (Facial Authentication)	less than 1 sec (Facial Authentication)
Touchless Biometric Authentication Distance	30 cm to 100 cm (Facial Authentication)			
False Acceptance Rate (FAR) %	FAR≤0.01% (Visible Light Facial Authentication)	FAR≤ 0.01% (Visible Light Facial Authentication) FAR≤ 0.0001% (Fingerprint ; ZKFingerprint V10.0; ZKFingerprint V13.0)	FAR≤0.01% (Visible Light Facial Authentication)	FAR≤ 0.01% (Visible Light Facial Authentication)
False Rejection Rate (FRR) %	FRR ≤ 0.02% (Visible Light Facial Authentication)	FRR ≤ 0.02% (Visible Light Facial Authentication) FRR≤ 0.01% (Fingerprint)	FRR ≤ 0.02% (Visible Light Facial Authentication)	FRR ≤ 0.02% (Visible Light Facial Authentication)
Biometric Algorithm	ZKFace VX5622	ZKFace VX5622 ZKFinger VX10.0	ZKFace VX5622	ZKFace VX5622
Card Type	ID Card@125 kHz & IC Card@13.56 MHz (Standard)			
QR Code	/	/	/	ZKBio Zexus Mobile App, PDF417 scanning in third-party development projects

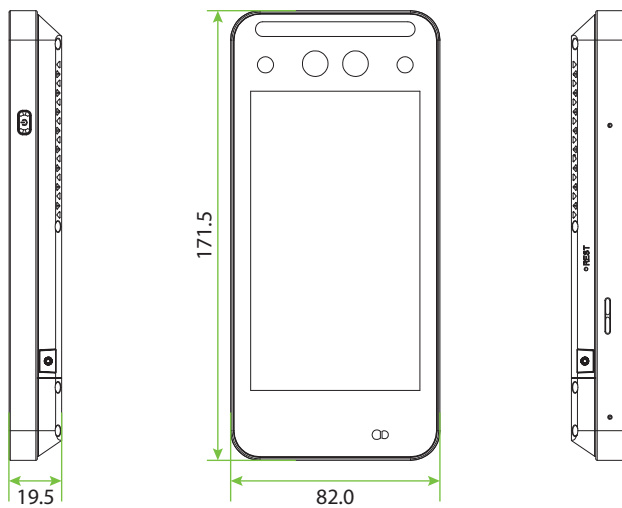
Communication	TCP/IP*1 Wi-Fi (IEEE 802.11 ac/a/b/g/n) @ 2.4 GHz & 5G GHz Bluetooth: BLE 4.1 Wiegand (Input & Output)*1 RS485: ZKTeco RS485 *1 Aux Inputs *1, Electric Lock*1, Door Sensor*1, Exit Button*1, Alarm*1			
Mobile Communication	Support 4G, Support GSM/WCDMA/TDSCDMA/LTE/TDD GSM4, W(B1/2/4/5/8) ;TD(34/39) PRX(1/2/3/4/5/7/8/12/17/20/28AB/34/38/39/40/41) DRX(1/2/3/4/5/7/8/12/17/20/38/39/40/41)			
Standard Functions	ADMS, Photo Capture, Event Photo Capture, Holidays, Anti-Passback, Schedule Bell, Record Query, Tamper Switch Alarm, Multiple Authentication Methods, AC Push and TA Push Protocol Switch, T9 Keyboard (Input)			
Access Control Interface	RS485 (RS485 Card Reader / Biometric Reader)			
Power Supply	DC 12V 3A	DC 12V 3A	DC 12V 3A Backup Battery	DC 12V 3A
Backup Battery	/	/	2000mAh (Lithium Battery)	/
Operating Temperature	-10°C to 45°C			
Operating Humidity	0% to 80% RH (Non-condensing)			
Dimensions	171.5mm * 82mm * 19.5mm (L*W*H)	216mm * 82mm * 19.5mm (L*W*H)		
Gross Weight	1.0 Kg	1.06 Kg		
Net Weight	0.39 Kg	0.46 Kg		
Supported Software	Software: ZKBio Time/ ZKBio CVAccess Mobile Application: ZKBio Zexus			
Installation	Wall-mount (Compatible with Asian Gang-box / Single Gang-Box)			
Certifications	ISO14001, ISO9001, CE, FCC, RoHS			

* Note: Horus E2-B Comming Soon !

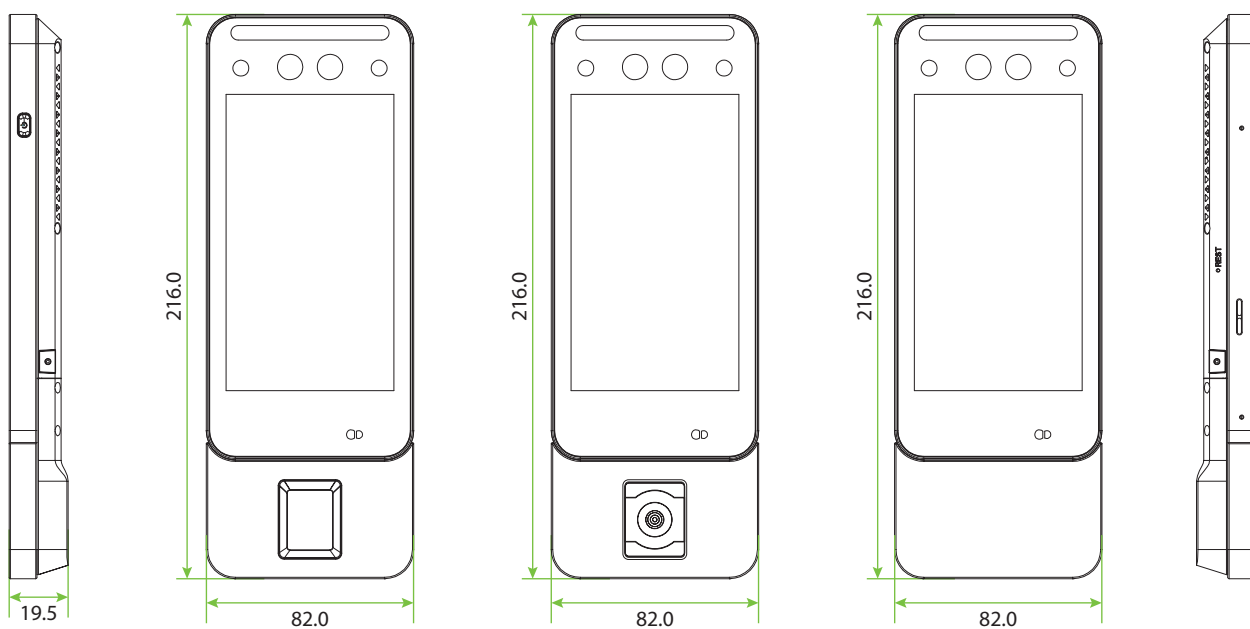
Configuration



Dimensions (mm)



Horus E2



Horus E2-FP

Horus E2-QR

Horus E2-B

